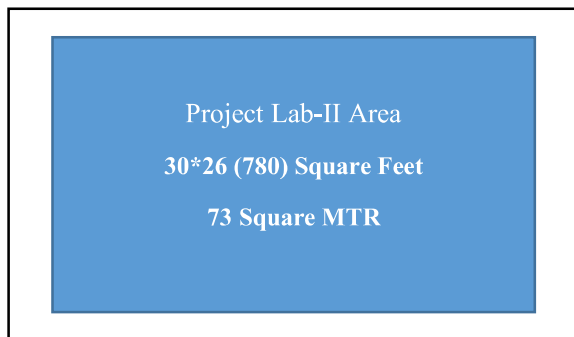


**Laboratory Details of Information Technology Department**  
**Project Lab-II (C Wing 2<sup>nd</sup> Floor)**



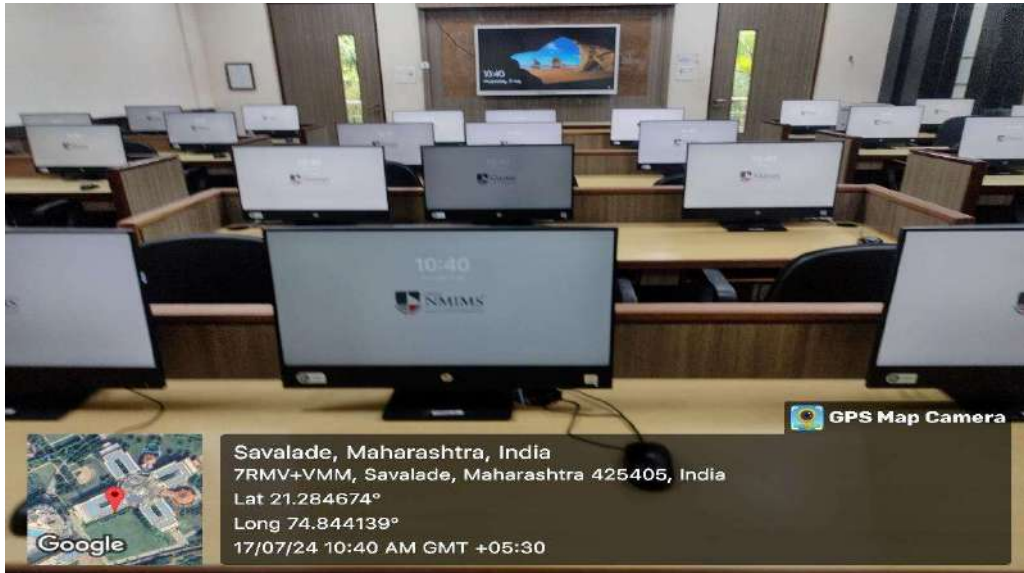
The Information Technology department has well equipped Project Lab-II to provide students with all the software required for developing and designing their final year degree projects. This lab with all required facilities is also available to those students doing PhD/PG for conducting their research projects and its implementation. Total cost of the major equipment for the lab is Rs. 18, 05,320 /-

**Major Equipment:**

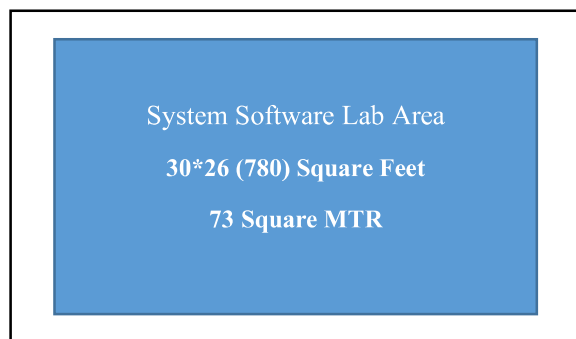
Sr. No	Item	Model	Description	No. of Item	
1	Desktop	HP Pro One 600 G6 22	Processor	Intel(R) Core (TM)i5 -10500T CPU @ 2.30GHz	32
			SSD	512 GB SSD	
			RAM	8GB	
			Board	intel	
			Monitor	IPS LED 22"	
			Mouse	HP USB Optical Sensor	
			Network	LAN, Wi-Fi	
			Keyboard	HP USB Keyboard	
2	Smart Board	SENSES 65 IV2000	Processor	Intel® Core™ i5-6400CPU 2.70 GHz	1
			Hard Disk	500 GB	
			SSD	128 GB	
			RAM	8GB	
			Board	Intel	
			Display	LED 65"	
			Network	LAN, Wi-Fi	
3	Network Switch	Cisco 48 Port Switch	Ethernet Routing Switch	1	

Sr. No	SOFTWARES	Sr. No	OTHER DETAILS	No. of Item
01	<b>Operating Systems:-</b> Windows 11 Pro	01	No of Chairs	33
02	<b>Programming Languages:-</b> Turbo C, Codeblocks, Java, Python, Anaconda Jupiter	02	No of Fans	04
03	<b>Project Software:-</b> Power BI, Android Studio, Project liber, MATLAB R2024a, RStudio,	03	No of ACs	02
		04	LED Lights	16
04	<b>Office Tools:-</b> MS Office 16, Acrobat Reader	05	CCTV Camera	01
05	<b>Antivirus SW:-</b> Symantec Endpoint 14	06	High-Speed LAN, Uninterrupted Power Supply Fire Safety measure	

## Laboratory Details of Information Technology Department



**Laboratory Details of Information Technology Department**  
**System Software Lab (C Wing 2<sup>nd</sup> Floor)**



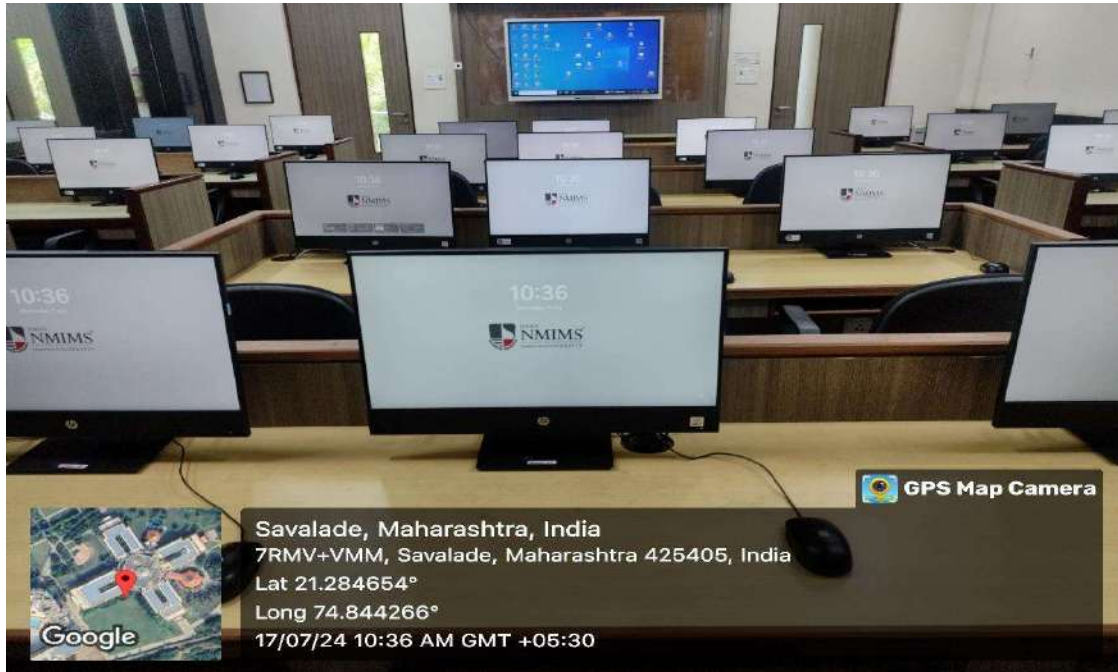
The Information Technology department has SS Lab with all necessary software's to provide environment to gain the knowledge of system software and also to develop an ability to design and implement various compiler optimization techniques. Total cost of the major equipment for the lab is Rs. **18, 05,320** /-

**Major Equipment:**

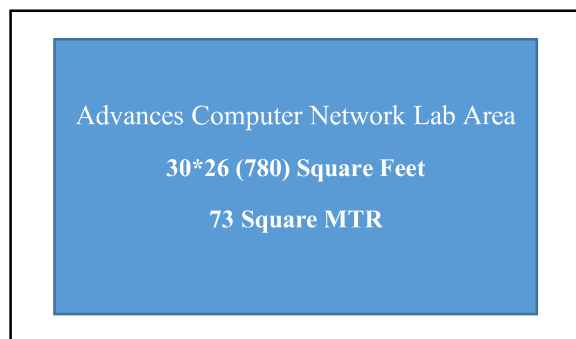
Sr. No	Item	Model	Description		No. of Item
1	Desktop	HP Pro One 600 G6 22	Processor	Intel(R) Core (TM)i5 -10500T CPU @ 2.30GHz	32
			SSD	512 GB SSD	
			RAM	8GB	
			Board	intel	
			Monitor	IPS LED 22"	
			Mouse	HP USB Optical Sensor	
			Network	LAN, Wi-Fi	
			Keyboard	HP USB Keyboard	
2	Smart Board	SENSES 65 IV2000	Processor	Intel® Core™ i5-6400CPU 2.70 GHz	1
			Hard Disk	500 GB	
			SSD	128 GB	
			RAM	8GB	
			Board	Intel	
			Display	LED 65"	
			Network	LAN, Wi-Fi	
			Input Method	Pen, Finger Touch	
3	Network Switch	Cisco 48 Port Switch	Ethernet Routing Switch		1

Sr. No	SOFTWARES	Sr. No	OTHER DETAILS	No. of Item
01	<b>Operating Systems:-</b> Windows 11 Pro	01	No of Chairs	33
02	<b>Programming Languages:-</b> Turbo C, Codeblocks, Java, Python, Anaconda Jupiter	02	No of Fans	04
03	<b>Programming Languages IDE:-</b> Eclipse, Netbeans 8.1, Python 3.11 Idle, Xampp Server, Anaconda, VS Code, MongoDB, Node JS	03	No of ACs	02
		04	LED Lights	16
04	<b>Office Tools:-</b> MS Office 16, Acrobat Reader	05	CCTV Camera	01
05	<b>Antivirus SW:-</b> Symantec Endpoint 14	06	High-Speed LAN, Uninterrupted Power Supply Fire Safety measure	

## Laboratory Details of Information Technology Department



**Laboratory Details of Information Technology Department**  
**Advances Computer Network Lab (C Wing 2<sup>nd</sup> Floor)**



The Information Technology department has well equipped ACN Lab to learn how to implement the different protocols, to get familiar with socket programming and various routing algorithms using various simulation tools for networking. Total cost of the major equipment for the lab is Rs. **18,05,320** /-

**Major Equipment:**

Sr. No	Item	Model	Description		No. of Item
1	Desktop	HP Pro One 600 G6 22	Processor	Intel(R) Core (TM)i5 -10500T CPU @ 2.30GHz	32
			SSD	512 GB SSD	
			RAM	8GB	
			Board	intel	
			Monitor	IPS LED 22"	
			Mouse	HP USB Optical Sensor	
			Network	LAN, Wi-Fi	
			Keyboard	HP USB Keyboard	
			Drives	DVD RW (R\RW)	
2	Smart Board	SENSES 65 IV2000	Processor	Intel® Core™ i5-6400CPU 2.70 GHz	1
			Hard Disk	500 GB	
			SSD	128 GB	
			RAM	8GB	
			Board	Intel	
			Display	LED 65"	
			Network	LAN, Wi-Fi	
Input Method	Pen, Finger Touch				
3	Network Switch	Cisco 48 Port Switch	Ethernet Routing Switch		1

Sr. No	SOFTWARES	Sr. No	OTHER DETAILS	No. of Item
01	<b>Operating Systems:-</b> Windows 11 Pro	01	No of Chairs	33
02	<b>Programming Languages:-</b> Turbo C, Codeblocks, Java, Python, Anaconda Jupiter	02	No of Fans	04
03	<b>Networking Software:-</b> Packet Tracer, Network Simulator	03	No of ACs	02
04	<b>Office Tools:-</b> MS Office 16, Acrobat Reader	04	LED Lights	16
05	<b>Antivirus SW:-</b> Symantec Endpoint 14	05	CCTV Camera	01
		06	High-Speed LAN, Uninterrupted Power Supply Fire Safety measure	

## Laboratory Details of Information Technology Department

